



INSTALLATION INSTRUCTIONS

GTI EL5 CLEANTECH TILES

These instructions are specifically written for the installation of the following products:

Product	Size	Thickness	Installation direction	Seams Welded
GTI EL5 Cleantech	25.59" x 25.59"	6mm	Same	Heat welded
GTI Underlayment	4" x 9 ft	4mm	N/A	N/A
Mipolam Biocontrol ESD+	6'6" wide	2mm	Same	Heat welded
Mipolam Biocontrol EL5	6'6" wide	2mm	Same	Heat welded
Conductive welding Rod	4 mm	Needed when a non-conductive adhesive is used		CR40 EL
Welding rod	5 mm	Acceptable when a conductive adhesive is used		CR50

Important Note: Before installing, refer to Gerflor USA Installation Handbook for acclimation, job site conditions, subfloor prep, and other general installation recommendations.

1. GENERAL INFORMATION

- 1.1. Gerflor flooring products are formulated to withstand high moisture conditions. To perform as designed, the concrete must be properly prepared to create a contaminate free and porous substrate.
- 1.2. Gerflor flooring products are not designed to withstand hydrostatic or osmotic pressure.
- 1.3. *The guidelines offered within this document are not intended to be all inclusive. Only qualified, professional flooring technicians experienced in the field of resilient flooring should proceed with this installation system.*
- 1.4. It is recommended to mechanically prepare the concrete via grinding or bead blasting the surface to achieve a CSP 1+, clean and porous substrate.
- 1.5. Moisture and pH testing must be performed in accordance with ASTM F710-22.
- 1.6. Adhesive bond tests are recommended to ensure adequate bonding to the substrate.
- 1.7. Do not install material that has visible defects or damage. A contractor that installs material that has visible defects or damage assumes responsibility for that material.

2. COPPER STRIP LAYOUT

- 2.1. Copper strip come in rolls of 656 linear feet.
- 2.2. The copper strip is 3/8" wide and 0.003" thick.
- 2.3. Layout copper strip and coordinate grounding with a certified electrician.
- 2.4. **Lay one copper strip every three rows of tiles in one direction only.**
- 2.5. **Apply adhesive first and let dry, then lay copper strips on top.**
- 2.6. **The copper must be in contact with the back of the tiles.**

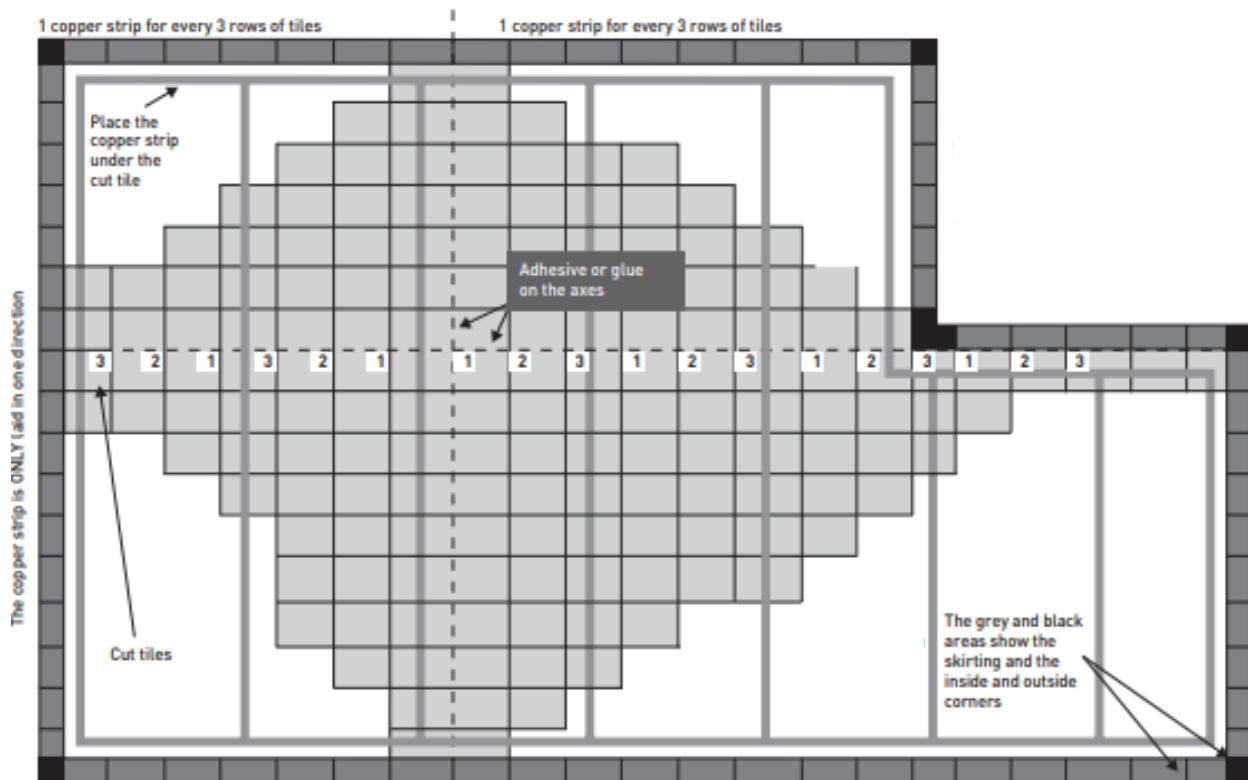


INSTALLATION INSTRUCTIONS

GTI EL5 CLEANTECH TILES

NOTE: THE TILES MUST BE GROUNDED EVERY 400 SQ. FT

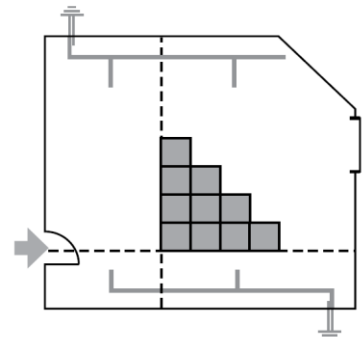
Lay copper strips around the perimeter near the walls that connect to create a “box” of copper strip around the room. Coordinate grounding point with electrician. Leave extra copper at walls for proper grounding.



3. LAYOUT AND INSTALLATION

NOTE: When installing GTI EL5 Cleantech Tiles, DO NOT pull tiles tight to each other. Tiles installed too tightly will make the grooving process difficult. Do not leave a gap greater than 1/32-inch-wide between tiles.

- 3.1. **DO NOT** mix batches of tiles.
- 3.2. Chalk the center lines of the work area in both directions so that one line is parallel to the length of the room and that the second line is on a 90° angle to the first line.
- 3.3. Position center lines to allow the perimeter tiles to be \geq to $\frac{1}{2}$ tile.

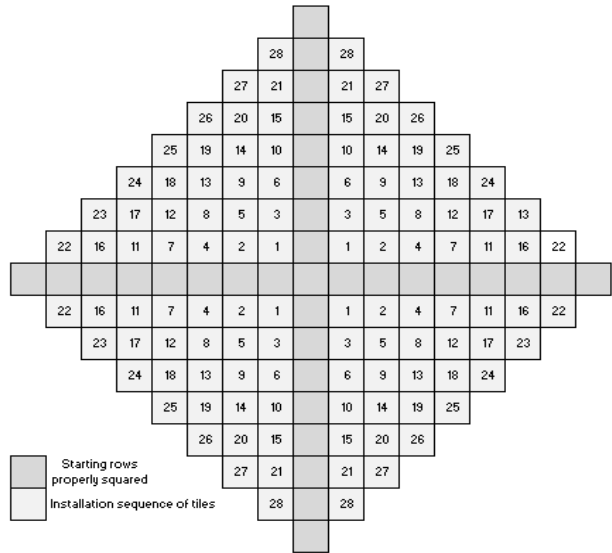




INSTALLATION INSTRUCTIONS

GTI EL5 CLEANTECH TILES

- 3.4. Before spreading adhesive, it is recommended to lay one or two rows of tiles along both center lines to check for proper alignment.
- 3.5. After the first tile is in place, begin laying tiles outward along both guidelines.
- 3.6. Install tiles in the same direction (see arrows on the back of the tiles.)
- 3.7. Press tiles **lightly** against adjoining tiles and lay them into the adhesive.
- 3.8. Begin stair-stepping the tiles into the field area.



4. SEQUENCE OF TILES

- 4.1. Follow the installation sequence to avoid any failures.

5. CUTTING AND FITTING

- 5.1. For door jambs or other irregular cuts, mark tiles with a pencil, heat with a hot air gun, and cut with a sharp utility blade. The tiles will cut easily when heated sufficiently.
- 5.2. The perimeter cuts can be made with a table saw and fine-tooth blade.
- 5.3. A Bullet PRO I-26 Magnum shear cutter is highly recommended for faster, precise perimeter cutting
- 5.4. A WEN 12 Amp Speed Plunge Cut Circular saw is an economical tool that can also be used for cutting perimeters. (Guide rails are also available)





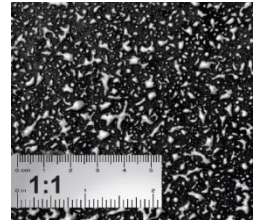
INSTALLATION INSTRUCTIONS

GTI EL5 CLEANTECH TILES

6. INSTALLING USING GERFIX SPRAY ADHESIVE

NOTE: Conductive weld must be used when installing with Gerfix Spray

- 6.1. Always refer to the **Gerfix Spray Adhesive Technical Data Sheet**
- 6.2. Recommended spray pattern: (150 to 185 sq. ft. per can)
- 6.3. Ensure substrate, flooring, and surrounding areas are clean and dust free.
- 6.4. Wipe your hand across surface to verify for dust.
- 6.5. If dust transfers, the substrate is not clean.
- 6.6. Damp-mop substrate if dust is present.
- 6.7. Protect from overspray with a spray shield, drop cloths, paper, or masking tape.



- 6.8. Shake aerosol can well. Remove white cap.
- 6.9. To ensure uniform adhesion of the entire surface, spray a workable amount of adhesive at one time.
- 6.10. Stand straight up to spray. Hold can upside down, approximately 20-30 inches horizontally from the substrate, aim at floor and press tip with finger.
- 6.11. Walk right to left smoothly to achieve results as seen on photo.
- 6.12. Adhesive should spray out in a wide mist and fall like snow.
- 6.13. Spraying in a sweeping motion may result in an inconsistent spray pattern.
- 6.14. Excess buildup or inconsistent spray pattern on substrate may cause telegraphing.
- 6.15. Avoid excessive application of the adhesive.
- 6.16. To ensure optimal spray pattern, remove any adhesive build up that may occur during the application process.
- 6.17. If overspray occurs, it may be removed with a damp cloth while the adhesive is still wet.



- 6.18. **Install copper strip into the tacky adhesive just before installing the flooring into the adhesive. Make sure there is no adhesive on top of the copper strip.**




- 6.19. Once the adhesive is dry to the touch, immediately install the flooring. While open, ensure that adhesive is not contaminated by dust.
- 6.20. Starting from the center line and working outward, apply the adhesive and install tiles when the adhesive is ready.
- 6.21. Press tiles lightly against adjoining tiles and press into the adhesive.
- 6.22. Roll flooring with a 3 section 100-lbs roller within 1 hour after installation to complete the bonding process.
- 6.23. Heat welding can proceed 24 hours after the installation
- 6.24. **Floor is open to all traffic immediately after installation.**



INSTALLATION INSTRUCTIONS
GTI EL5 CLEANTECH TILES

7. INSTALLING USING GERFIX TPS+ ACRYLIC ADHESIVE

NOTE: Conductive weld rod must be used when installing with Gerfix TPS+

- 7.1. Always refer to the **Gerfix TPS+ Adhesive Technical data Sheet**
- 7.2. Recommended trowel size is 1/32" x 1/16" x 1/32", covering from 170 to 220 sq. ft. per US gallon. 
- 7.3. To ensure uniform adhesion of the entire surface, apply a workable amount of adhesive at one time.
- 7.4. Maintain a uniform spread rate. Replace trowel (or trowel blade) with every pail used.
- 7.5. Immediately after troweling the adhesive onto the concrete use a medium napped paint roller saturated with adhesive to flatten out visible trowel marks and even out the adhesive. **A double arm roller frame is recommended to ensure an even coat of adhesive.**
- 7.6. "Open time" of the adhesive is dependent upon porosity of the substrate, temperature, and humidity. It is important that the installers familiarize themselves with the adhesive before starting the installations.

<i>Application Characteristics over Porous Substrates (Non-Porous-see note below)</i>		
	<i>Open Time*</i>	<i>Working Time**</i>
Gerflor GTI EL 5 Cleantech Tiles	20 to 40 minutes (to reach a tacky state***)	Up to 1.5 hours

* **Open Time:** is the wait time required before installing flooring into the adhesive.

** **Working time:** is the wait time required before installing flooring into the adhesive.

*** **Tacky:** When adhesive starts to become translucent and there is light transfer to the fingers when slightly touched resulting in transfer to the backing of the flooring.

Note: For Non-Porous substrates let the adhesive dry completely, with no transfer to the fingers when touched, then immediately install the flooring and roll with a 100lb. roller.

- 7.7. Starting from the center line and working outward, apply the adhesive and install tiles when the adhesive is ready.
- 7.8. Press tiles lightly against adjoining tiles and press into the adhesive.
- 7.9. Periodically, lift the edge of a tile to confirm transfer of adhesive to the back of the flooring. There must be adhesive transfer for the tiles to be adequately secured to the substrate.
- 7.10. Once flooring is placed into the adhesive, immediately roll thoroughly with a 3 section 100-lbs roller in both directions.
- 7.11. Always roll seams, at the walls, and under toe kicks with a hand roller to ensure 100% transfer of adhesive.
- 7.12. During the installation, with the lights on and off, always double check the flooring for bubbles with portable, ambient, and/or fixed lighting.



INSTALLATION INSTRUCTIONS


GTI EL5 CLEANTECH TILES

- 7.13. Heat welding can proceed 24 hours after the installation
- 7.14. **Avoid adhesive displacement by prohibiting traffic for a period of 24 hours and 72 hours for rolling loads**

8. INSTALLING USING GERFIX 196 HYBRID MULTI-PURPOSE ADHESIVE

- **GERFIX 196 IS CHEMICALLY REACTIVE. ONCE MIXED, THE POT LIFE IN THE BUCKET IS 2 HOURS; AFTER SUCH TIME, DISCARD ANY REMAINING ADHESIVE**
- **Trowel the adhesive onto the substrate using a 1/32" x 1/16" x 1/32" U notched trowel. Coverage of 425 – 550 sq. ft. per Pail.**
- **It is imperative to use the proper trowel as well as maintaining the proper notch size over the course of the entire floor.**
- **Prepare concrete per ASTM F-710. Concrete should be mechanically prepared to a CSP 1+ to ensure a porous contaminate free substrate.**
- **Inadequate application of adhesive will void the warranty.**
- **Use mineral spirits to remove wet or dry adhesive.**

NOTE: Conductive weld rod must be used when installing with Gerfix 196

- 8.1. Always refer to the **Gerfix 196 Adhesive Technical Data Sheet**.
- 8.2. Follow the guidelines indicated on the Technical Data Sheet.
- 8.3. Recommended trowel size is 1/32" x 1/16" x 1/32", covering from 170 to 220 sq. ft. per US gallon. 
- 8.4. Mix 2-part acrylic adhesive part A and part B as recommended by the adhesive manufacturer.
- 8.5. To ensure uniform adhesion of the entire surface, apply a workable amount of adhesive at one time.
- 8.6. Maintain a uniform spread rate. Replace trowel (or trowel blade) with every pail used.
- 8.7. Immediately after troweling the adhesive onto the concrete use a medium napped paint roller saturated with adhesive to flatten out visible trowel marks and even out the adhesive. A double arm roller frame is recommended to ensure an even coat of adhesive.

<i>Application Characteristics over Porous Substrates & Non-Porous Substrates</i>		
	<i>Open Time*</i>	<i>Working Time**</i>
Gerflor Modular Products	20 to 30 minutes (to reach a tacky state***)	1 to 3 hours

* **Open Time:** is the wait time required before installing flooring inot the adhesive.

** **Working time:** is the wait time required before installing flooring inot the adhesive.

*** **Tacky:** When the adhesive starts to becomes translucent and there is light transfer to the fingers when slightly touched.



INSTALLATION INSTRUCTIONS

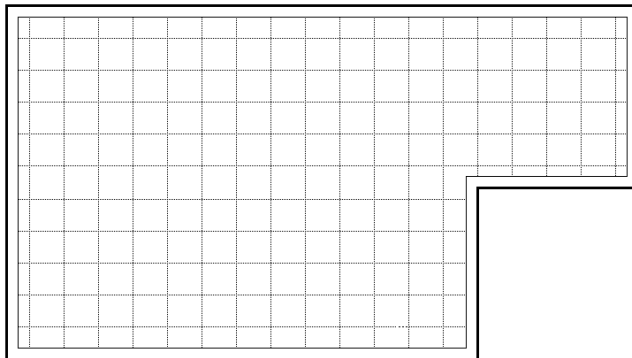
GTI EL5 CLEANTECH TILES

NOTE: Allow the adhesive to transition from the wet stage to a tacky-dry stage (no transfer to fingers, when lightly touched) then immediately install the install copper strip into the tacky adhesive into the adhesive making sure there is no adhesive on top of the copper strip, then install flooring and roll with a 100lb. roller.

- 8.8. Starting from the center line and working outward, apply the adhesive and install tiles when the adhesive is ready.
- 8.9. Press tiles firmly against adjoining tiles and press into the adhesive.
- 8.10. Once flooring is placed into the adhesive, immediately roll thoroughly with a 3 section 100-lbs steel roller in both directions.
- 8.11. Always roll seams, at the walls, and under toe kicks with a hand roller to ensure 100% transfer of adhesive.
- 8.12. Continually check the flooring for bubbles. To verify there are no bubbles, look down and across the flooring from both a standing and prone position with the lights on and off. The use of a light source at floor level can be helpful in finding any air pockets or bubbles.
- 8.13. Heat welding can proceed after **24 hours from time of installation**
- 8.14. **No heavy foot traffic for 6-12 hours after installation, no heavy rolling loads for 24 hours and no heavy point loads for 72 hours.**
- 8.15. Use mineral spirits to remove fresh or dried adhesive from the surface of the flooring
- 8.16. Following the above steps is of the utmost importance for a successful installation that will resist high moisture levels and be serviceable over the life of the floor.

9. FLASHCOVING SHEET VINYL WITH GTI CLEANTECH

- 9.1. Measure and cut GTI tiles 4 inches from all perimeter walls.
- 9.2. If SPM wall panels are to be installed, the wall panels should be installed first and then the flooring. Eliminate the cove cap and underscribe the vinyl to the wall panels to ensure evenly spaced seams for welding.

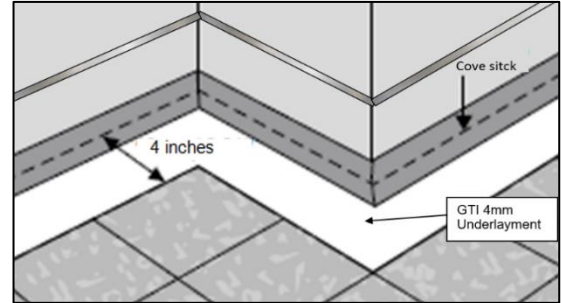




INSTALLATION INSTRUCTIONS

GTI EL5 CLEANTECH TILES

- 9.3. On the 4" edge of the perimeter, install Gerflor 4mm GTI Underlayment and then install the cove stick on top of it. (Use same adhesive as used to install the flooring.)
- 9.4. Measure height for cap metal and install.
- 9.5. Metal cap is preferred over vinyl.
- 9.6. Cut the homogeneous sheet to the desired size to complete the flashcoving.



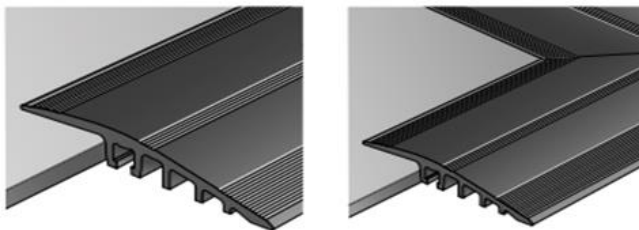
- 9.7. Apply adhesive and install the pieces of homogeneous sheet to the floor and wall, being careful to ensure it is tight in the cove stick.
- 9.8. Miter the inside and outside corner seams and cut the vinyl net with the walls vertically on the corners. This flashcoving method is sometimes called picture framing, or border coving.
- 9.9. Roll floor, cove radius, and walls with hand roller to ensure proper bonding.
- 9.10. Weld all vertical and corner seams and trim with hand tools.

10. CLEAN CORNER INSTALLATION – REFER TO THE “CLEAN CORNER” DOCUMENT

- 10.1. When installing the Clean Corner system, and to achieve the inside and outside corners, a minimum of 12" pieces of vinyl will need to be cut and used to fill in each corner.
- 10.2. Fit piece in the corner by butting up squarely to the GTI tiles. Heat with hot air gun, fold back and install per the Clean Corner Installation Document.
- 10.3. After fitting the inside and outside corner pieces, measure distance of walls between each corner and install the appropriate size pieces of sheet vinyl. Make clean vertical seams between the inside and outside corner pieces

11. DOORWAYS AND TERMINATIONS

11.1. ALUMINUM PROFILE



- 11.2. For heavy traffic. (Pre-made corner pieces are also available.)
- 11.3. 4mm x 50mm and 30mm long nylon plugs are included in profile kit.
- 11.4. Cut tiles and lay metal at desire location.



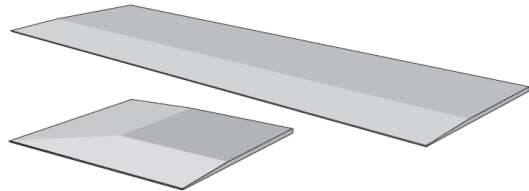
INSTALLATION INSTRUCTIONS

GTI EL5 CLEANTECH TILES

- 11.5. Hold metal securely and use hammer to drill 3mm pilot holes through the center of each hole.
- 11.6. Remove metal and finish holes with 6mm drill bit.
- 11.7. Vacuum holes and insert nylon plugs
- 11.8. Realign metal and secure with 4mm x 50mm screws and Philipps screwdriver

11.9. GTI ACCESS AND CORNER PIECES

- 11.10. For moderate traffic, only available for GTI
- 11.11. Must be glued down using T-111 adhesive
- 11.12. Weight down until adhesive cures



12. HEAT WELDING - REFER TO THE “HEAT WELDING GERFLOR VINYL PRODUCTS” DOCUMENT

13. ONCE THE INSTALLATION IS COMPLETED

- 13.1. Perform a visual inspection of the project.
- 13.2. Verify every welded seam.
- 13.3. Repair every imperfection before leaving the project.
- 13.4. Make sure that every vertical obstacle such as doorframes are well trimmed and sealed with an acrylic, silicone, or equivalent sealant product.
- 13.5. To maximize the aesthetic appearance and serviceability of the newly installed flooring, provide your customer with a copy of the **Gerflor USA Maintenance Instructions**.